

MICHAEL BREIN'S GUIDE TO

Maui

Bus Map
& Guide



Free
Extra Bonus Features!

Island of Maui

A SIGHTSEEING MAP / GUIDE

Maui Bus

Island of Maui buses display route numbers and destinations above the drivers. Enter through front door and deposit exact fare in the box, since driver carries no change. Only baggage that can be stored under seat or on passenger's lap will be permitted. The one-way fare is \$1.00 (subject to change without notice). The Kahului and Wailuku Loops and the Lahaina Villager are free.

Unless otherwise noted one-way trips to distant points of interest take one hour depending on traffic and distance (1/2 hr to Maalaea Harbor Village from Kahului, Kihei or Lahaina).

Going to points of interest on Maui requires you to start in Lahaina, Kaanapali, Kihei or Kahului. Check with Maui Bus (see below) to see how to get to these areas. You also may be required to transfer to another bus in either Maalaea Harbor Village (Maui Ocean Center bus stop) or Kahului (Queen Kaahumanu Center bus stop), two important Maui Bus transfer bus stops. For instance, traveling between Lahaina and Kihei requires you to transfer in Maalaea. Also, going from Lahaina or Kihei to some points of interest may require you to transfer to another bus in Kahului. (There are no transfers, per se; it is necessary to pay a fare for each bus used.)

Use bus routes and stops shown on the maps of points of interest.

Maui Bus Information

☎ 808-871-4838

www.co.maui.hi.us

Tourist Information

☎ 800 GoHawaii
(800-464-2924)

www.GoHawaii.com

Points of Interest

Abbreviations

Refer to **SYMBOLS** included in Michael Brein's Guide to Honolulu & Oahu by TheBus see www.michaelbrein.com/honolulu.

Information is subject to change without notice.

\$ = admission charge; otherwise free. Some museums may be free on some days.

☉ = closed; otherwise open daily. Some attractions are closed holidays. Days/hrs may vary from those shown. Some museums close between exhibitions.

"Must See" attractions are highlighted in red.

- 1 Lahaina Scenic Bus Ride** Former whaling port & royal capital of Hawaii, now bustling tourist center of Maui w/ dining, shopping & entertainment. Front Street reminiscent of old Hawaii. Giant banyan tree & other attractions. Wharf Cinema Center, important transit transfer point.
- 2 Kaanapali Beach Resort** Long stretch of beach w/many hotels, restaurants & shops. Whalers Village, important transit transfer point.

- 3 Maui Ocean Center** Maalaea Harbor. ☎ 808-270-7000. "The Hawaiian Aquarium" w/60 indoor & outdoor exhibits incl living reef, turtle lagoon, tide pool, open ocean w/tunnel & much more. Important transit transfer point between Kihei, Lahaina & Kahului \$

- 4 Kihei Scenic Bus Ride** Major tourist area along a long stretch of beach parks. Lots of dining, shopping & entertainment. Also Wailea, an upscale beach resort.

- 5 Paia** Popular beach center w/restaurants, galleries, offbeat places & locally popular Baldwin beach. Charley's, sometimes hangout of Willie Nelson.

- 6 Upcountry Scenic Bus Ride** Makawao, Paniolo (cowboy) hub of upcountry Maui, reminiscent of the old West. Now crafts, galleries, restaurants. Beautiful mountain, sugar cane & sea vistas.

- 7 Kahului** Maui's commercial center. Queen Kaahumanu Shopping Center, important transit transfer point. To / from Airport.

Maui



MAUI

1 Lahaina Scenic Bus Ride

-TO-

In Kahului board 20 LAHAINA ISLANDER / WHARF CINEMA CTR at ① in Queen Kaahumanu Ctr. Or board same bus at ② in Maalaea Harbor Village. Get off in Lahaina at Wharf Cinema Ctr ③.

-FROM-

In Lahaina board 20 LAHAINA ISLANDER / QUEEN KAAHUMANU CTR at ③. Get off in Maalaea Harbor Village at ② or in Kahului at Queen Kaahumanu Ctr ①.



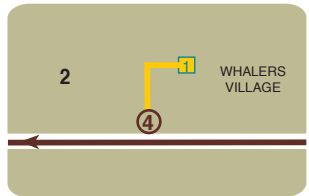
2 Kaanapali Beach Resort

-TO-

In Lahaina board 25 KAA NAPALI ISLANDER / WHALERS VILLAGE at ③ in Wharf Cinema Ctr. Get off in Kaanapali at Whalers Village ④.

-FROM-

In Kaanapali board 25 KAA NAPALI ISLANDER / WHARF CINEMA CTR at ④. Get off in Lahaina at Wharf Cinema Ctr ③.



3 Maui Ocean Center

-TO-

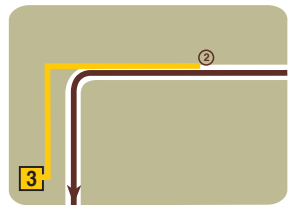
In Kahului board 10 KIHEI ISLANDER or 20 LAHAINA ISLANDER at ① in Queen Kaahumanu Ctr. Get off in Maalaea Harbor Village at ②.

-FROM-

In Maalaea Harbor Village board 10 KIHEI ISLANDER / or 20 LAHAINA ISLANDER / QUEEN KAAHUMANU CTR at ②. Get off in Kahului at Queen Kaahumanu Ctr ①.

-NOTE-

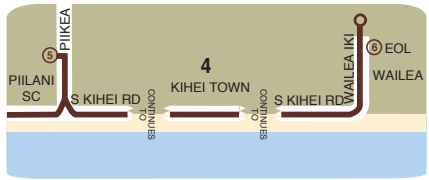
To or from Lahaina see 1 above.
To or from Kihei or Wailea see 4 below.



4 Kihei Scenic Bus Ride

-TO-

In Kahului board **10 KIHEI ISLANDER** at ① in Queen Kaahumanu Ctr. Or board same bus at ② in Maalaea Harbor Village. Get off in Kihei at Piilani Shopping Ctr ⑤, at bus stops along S Kihei Rd, or in Wailea at ⑥.



-FROM-

In Kihei board **10 KIHEI ISLANDER / QUEEN KAAHUMANU CTR** at ⑤ or ⑥ or at bus stops along S Kihei Rd. Get off in Maalaea Harbor Village at ② or in Kahului at Queen Kaahumanu Ctr ①.

-NOTE-

To go to Wailea, incl Wailea Shopping Ctr, beaches and hotels, get off at ⑥, the end of the line.

5 Paia

--TO-

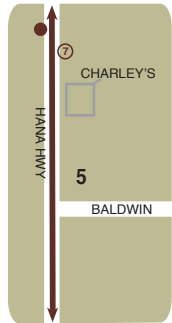
In Kahului board **35 HAIKU ISLANDER** at ① in Queen Kaahumanu Ctr. Get off in Paia at ⑦.

-FROM-

In Paia board **35 HAIKU ISLANDER / QUEEN KAAHUMANU CTR** at ●. Get off in Kahului at Queen Kaahumanu Ctr 1.

-NOTE-

Get off bus at ⑦ just past Charley's Restaurant.



6 Upcountry Scenic Bus Ride

--TO-

In Kahului board **40 UPCOUNTRY ISLANDER** at ① in Queen Kaahumanu Ctr. Get off in Makawao at ⑧.

-FROM-

In Paia board **40 UPCOUNTRY ISLANDER / QUEEN KAAHUMANU CTR** at ⑧. Get off in Kahului at Queen Kaahumanu Ctr ①.



7 Kahului

-TO-

Board any **QUEEN KAAHUMANU CTR**. Get off in Queen Kaahumanu Ctr at ①.

-FROM-

See 1-6 above.

